

LICENSING PLAN KEY

- Carbon-dioxide Fire Extinguisher.
- Foam Fire Extinguisher.
- Edge Lit Exit Sign
- Optical Smoke Detector
- Optical Smoke Detector including beacon sounder base
- Wall mounted audio/visual indicator
- Wall mounted sounder
- Wall mounted manual call point
- Disable-Relieve Call Point
- Fire alarm interface
- Main Fire Panel
- Fire Resistant Glazing fire resistance
- AREA TO BE USED FOR THE PROVISION OF REGULATED ENTERTAINMENT / PROVISION OF ENTERTAINMENT FACILITIES / PROVISION OF LATE NIGHT REFRESHMENT INCLUDING SALE AND SUPPLY OF ALCOHOL
- EXTENT OF CINEMA DEEMISE
- AREAS EXCLUDED FROM LICENSE

POSITION OF FIRE EQUIPMENT IS INDICATIVE ONLY AND CAN BE CHANGED WITHOUT REQUIRING A CHANGE TO THE LICENSING PLAN

2 MINOR UPDATES
REVISION ISSUE
Revision Description

18.04.23
18.05.21
Date

NBA Architects DA

www.nbaarchitects.co.uk
Tel: 01855 515559

Client: Reel Cinemas

Project: Reel Farmham

Drawing: GROUND FLOOR LOBBY LICENSING PLAN

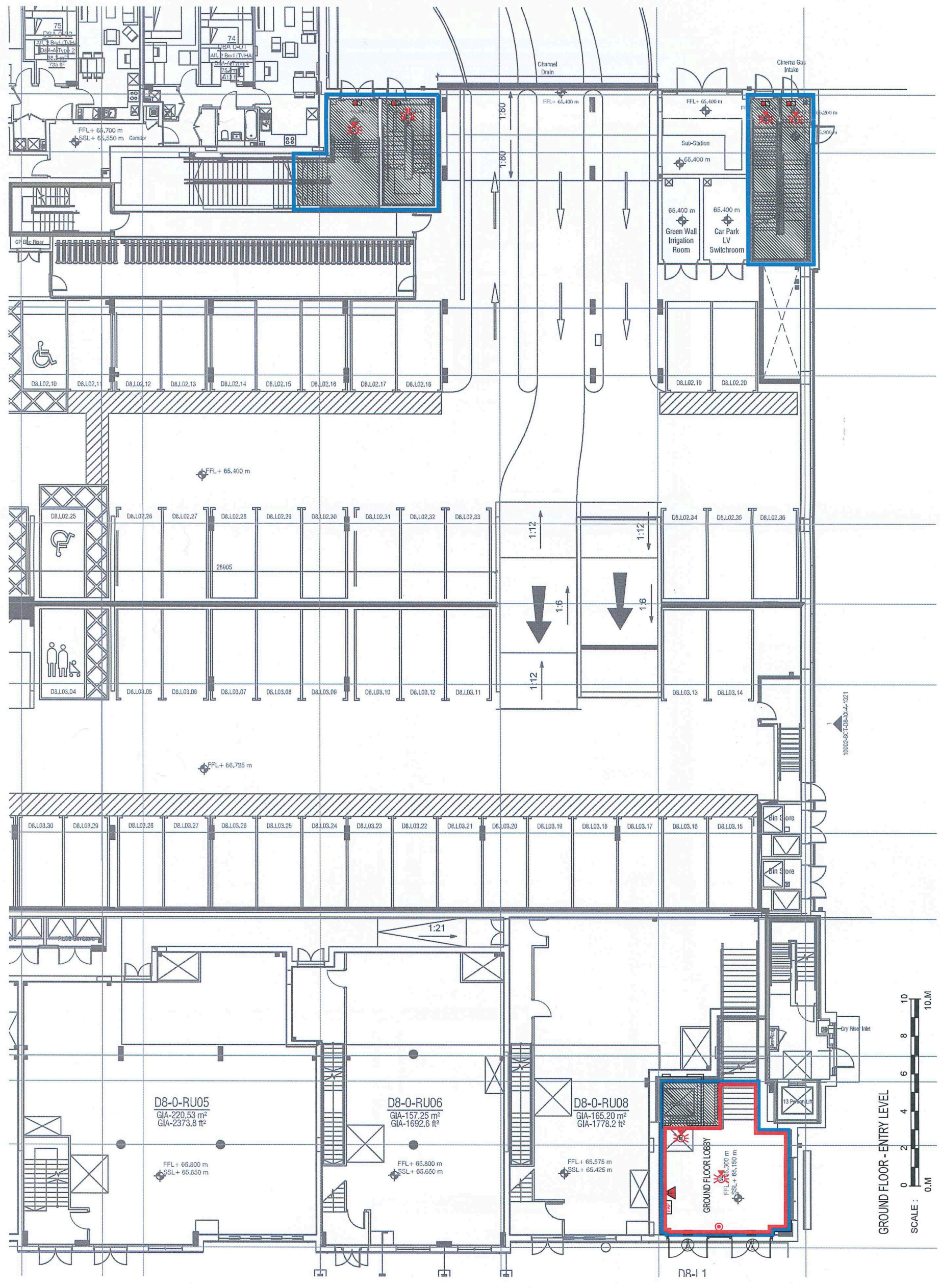
Drawing No: 1456-FA-1000

Scale: 1:100@A1

Revision 2

Date: 10.05.21
Drawn: TIF
Checked: TIF

This drawing is copyright of NBA DA, Ltd. and should not be reproduced without permission. Dimensions should not be scaled off this drawing. All dimensions should be checked on site.



LICENSING PLAN KEY

- Carbon-dioxide Fire Extinguisher.
- Foam Fire Extinguisher.
- Edge Lt Exit Sign
- Optical Smoke Detector
- Optical Smoke Detector including beacon sounder base
- Wall mounted audio/visual early indicator
- Wall mounted sounder
- Wall mounted manual call point
- Disabled Refuge Call Point
- Fire alarm interface
- Main Fire Panel
- Fire alarm interface
- Fire alarm interface

AREA TO BE USED FOR THE PROVISION OF REGULATED ENTERTAINMENT / PROVISION OF ENTERTAINMENT FACILITIES / PROVISION OF LATE NIGHT REFRESHMENT INCLUDING SALE AND SUPPLY OF ALCOHOL.

EXTENT OF CINEMA DEMISE

AREAS EXCLUDED FROM LICENSE

POSITION OF FIRE EQUIPMENT IS INDICATIVE ONLY AND CAN BE CHANGED WITHOUT REQUIRING A CHANGE TO THE LICENSING PLAN

| Revision | Description | Date |
|----------|---------------|----------|
| 2 | MINOR UPDATES | 10.06.21 |
| 1 | ISSUE | 10.06.21 |



www.nba-architects.co.uk
 Tel 01625 575529

Client Reel Cinemas

Project Reel Farnham

Drawing THIRD FLOOR
 PROJECTION LEVEL
 LICENSING PLAN

Drawing No. 1456-FA-1003

Scale 1:100@A1
 Date 10.06.21
 Drawn EW
 Checked JH

